

# Installation and Configuration Procedures

## Running with an e-DNC Hub

1. Log onto the e-DNC hub. This can be accomplished by attaching a monitor and keyboard to the hub, or by using remote desktop.

For non-Windows XP systems, the Remote Desktop installation has been provided on the CD.

2. Run “Start/Programs/Accessories/Communications/Remote Desktop Connection”. Enter the e-DNC Hub’s network name (i.e. EDNC803AD03) for the Computer when prompted. The Hub name can be found on the e-DNC Hub.
3. Enter the user name “CustAdmin” and “admin” for the password at the login prompt. Once logged in, you are running as the administrator on the e-DNC Hub.

**The network settings for the e-DNC Hub have been pre-configured to be a member of the “WORKGROUP” group using a DHCP Server. The following steps will guide you to the location of those settings should you wish to change them.**

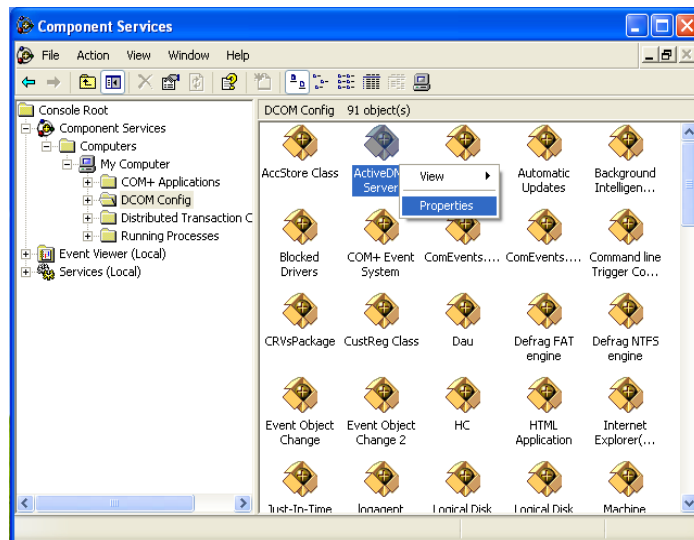
4. Select “Start/Control Panel/System”, the “Computer Name” tab contains the settings for the computer name, workgroup, and domain.
5. Select “Start/My Network Places”.
6. On the left-hand side of the Network Places windows, select “View Network Connections”.
7. Highlight the “Local Area Connection” and then select “Change settings of this connection” in the left-hand window panel. The IP settings can be changed at this point.

8. If any network settings were changed, reboot the e-DNC hub.

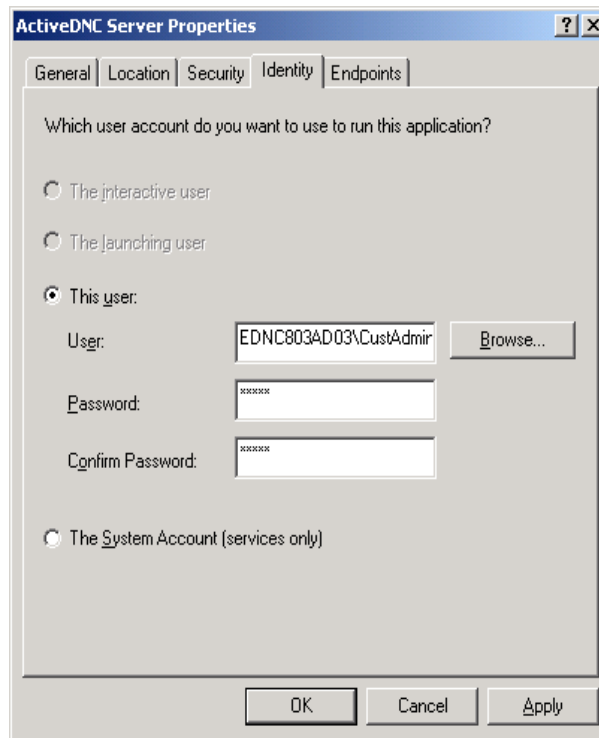
**The DCOM settings for the e-DNC Hub have been pre-configured.**

**“Everyone” is given access to the hub with the ActiveDNC Server running as the “CustAdmin” user account. The following steps will guide you to the location of those settings should you wish to change them.**

9. Access the DCOM configuration on the e-DNC hub by running “Start/Run” and enter “*dcomcnfg*” on the e-DNC hub.
10. Right click on “*ActiveDNC Server*” under the “*Component Services/Computer/My Computer/DCOM Config*” and select “*Properties*”.



11. The ActiveDNC Server Properties page will be displayed. Click on the “Identity” tab and verify that the “This user” item is selected. This identifies the user account that the ActiveDNC Server is running as. This user account must be a member of the e-DNC hub’s Local Administrators group. But this account doesn’t need be a member of the Administrator group elsewhere on the network. This account must also have access to all of the part program files.

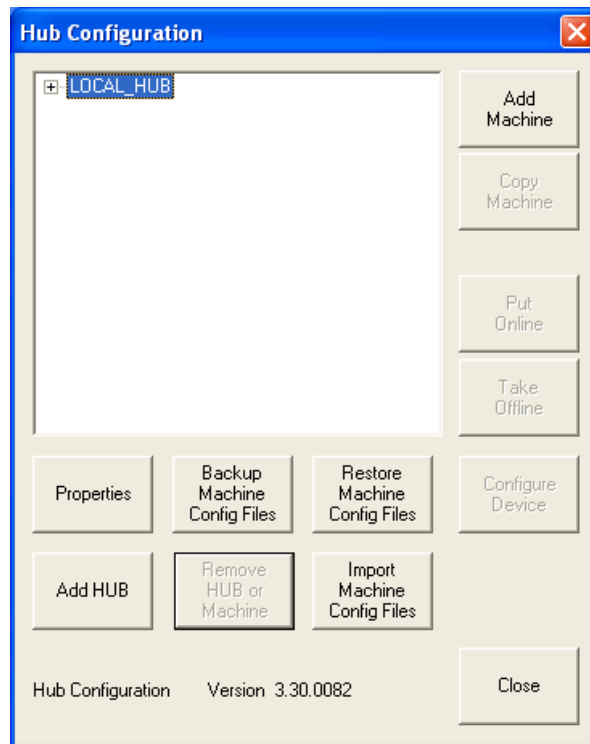


12. Click the “OK” button to save your changes and to exit.
13. Select “Start/Administrative Tools/Services”. Double-click on the “EmbeddedDNC Server” service. The properties page will be displayed. Verify that the Startup Type is “Automatic”. This will ensure that the server is always running when the e-DNC hub is powered on.
14. Save the settings permanently by clicking on “Start/All Programs/EmbeddedDNC/Save OS Changes”. Reboot the e-DNC hub to ensure that the changes have taken affect.

**The following describes the necessary steps to install and configure e-DNC Explorer to run with an e-DNC hub.**

15. If installing on Windows 95, you must install the DCOM95 or DCOM98 upgrade package. This is available directly from Microsoft. Windows 98/ME/NT/2000 already have it built-in, though the DCOM98 is an update for Windows 98.
16. Install e-DNC Explorer onto the workstation using all of the default options.

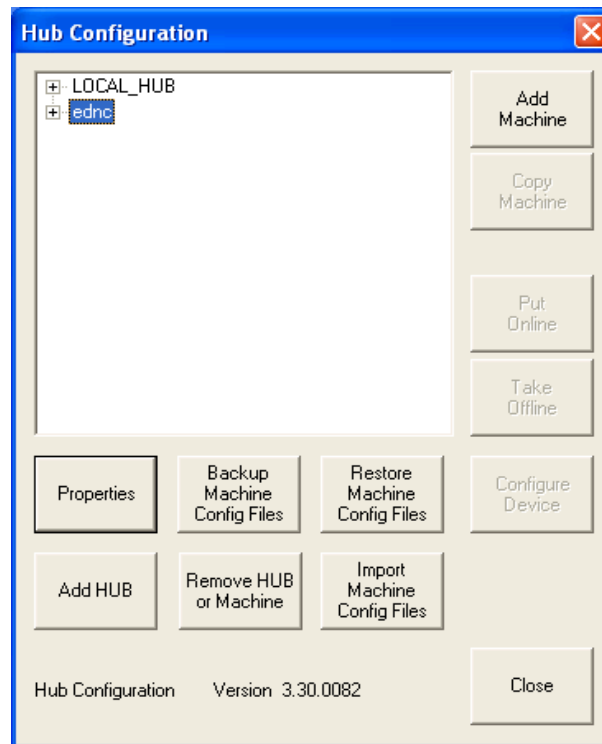
17. Run the Machine Configuration utility by selecting “Start/Programs/EmbeddedDNC/Machine Configuration”.



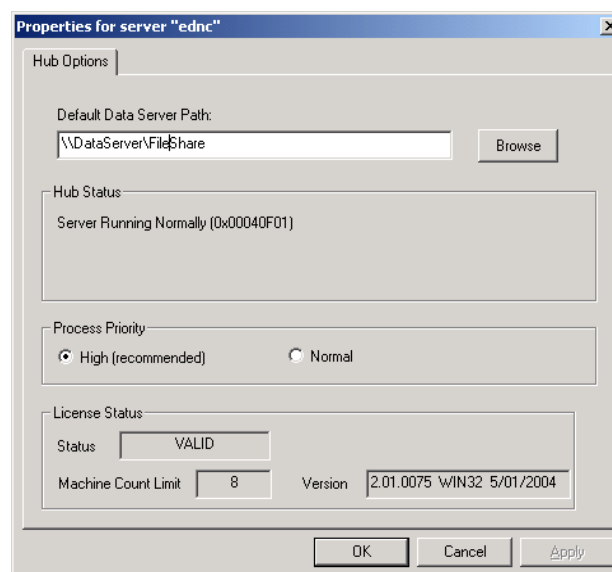
18. Click on the “Add Hub” button. Type the network name of the e-DNC hub in the Add Hub popup dialog box. Click on the “Add” button to accept the entry.



19. Highlight the e-DNC hub name in the Hub Configuration window and click on the “Properties” button.



20. Enter the “Default Data Server Path” in the Properties dialog box for the selected e-DNC hub. This path will need to be a shared folder that will contain the log files for the machines that are connected to this hub. This folder will also contain the backup configuration files for the defined machines on the hub. Click on the “OK” button to accept the “Default Data Server Path” entry.



**NOTE:** Entering the Default Data Server Path needs to be performed **ONLY ONCE** for each e-DNC hub. Perform steps 15, 16, 17, and 18 for all other workstations that e-DNC Explorer is to be installed on.

21. The system is now ready for the addition of the machines on the e-DNC hub. This can be accomplished by running the Machine Configuration utility (“Start/Programs/EmbeddedDNC/Machine Configuration”).

**The following steps describe the process of configuring the Part Library database.**

22. First determine a location for the database and database application. This can be anywhere as long as each e-DNC Explorer workstation can map to it.
23. Copy the database file, “Program Files\e-DNC Explorer\gspartlib.mdb to that location.
24. Click “Start\Settings\Control Panel” then double click the icon for ODBC (if Windows 2000 or XP, double click the Administrative Tools icon first). See below if there is no applet for ODBC.
25. Click the Drivers tab.
26. Click the System DSN tab.
27. Click the Add button.
28. Select the Microsoft Access Driver (\*.mdb) and click Finish. If the name Microsoft Access Driver (\*.mdb) is not listed, follow the no applet for ODBC steps.
29. Type GS PART LIB into the Data Source Name field.
30. Click the Select button.
31. Using the file dialog box, find and select "gspartlib" in the folder in which you placed it.
32. Click OK and exit the ODBC Configuration.

**If there is no applet for ODBC or it does not contain the above driver, perform the following:**

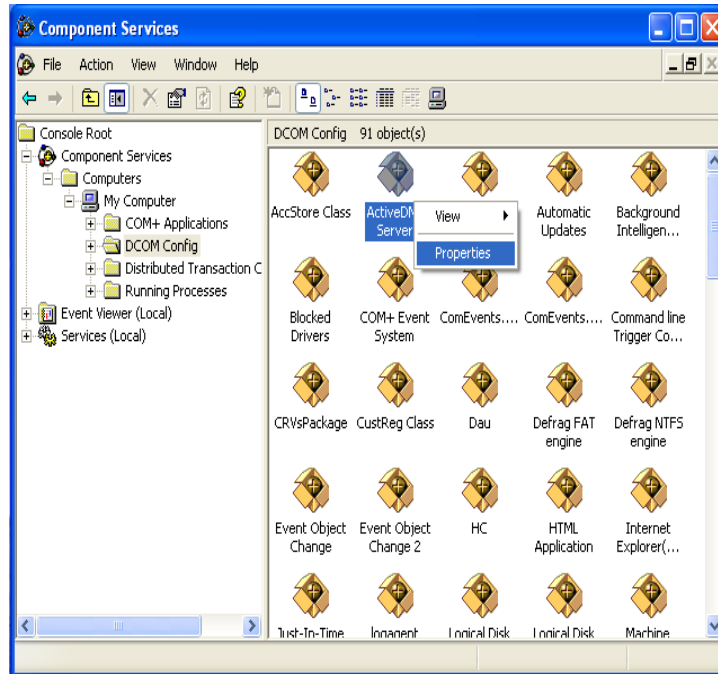
1. Close the Control Panel and/or any applications.
2. Place the e-DNC Explorer CD in your drive.
3. Browse the CD using Windows Explorer.
4. Double click on the Part Library folder.
5. Double click on Mdac\_typ.exe.
6. Click the Yes button.
7. Click the Continue button.
8. Click the Complete button.
9. Click the OK button when finished.

## **Running as a standalone Workstation**

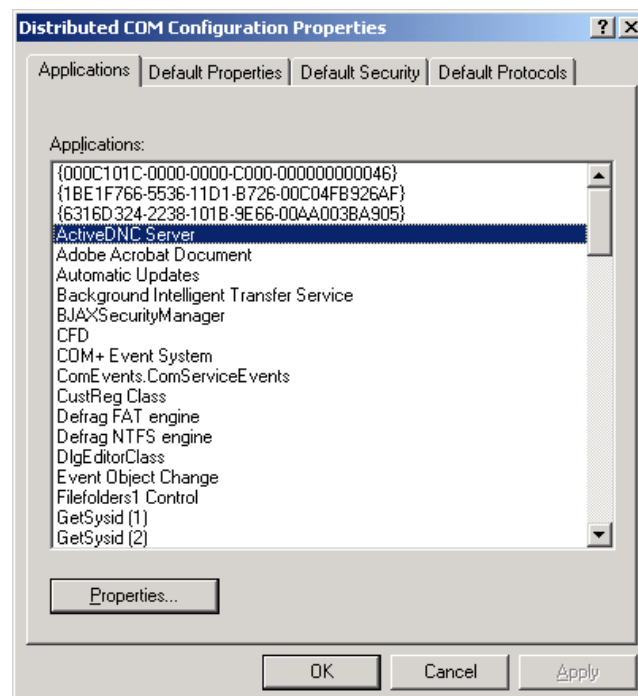
1. If installing on Windows 95, you must install the DCOM95 or DCOM98 upgrade package. This is available directly from Microsoft. Windows 98/ME/NT/2000 already have it built-in, though the DCOM98 is an update for Windows 98.
2. Install e-DNC Explorer onto the workstation using all of the default options.

**The following steps will guide you through the process of setting up DCOM on the standalone workstation.**

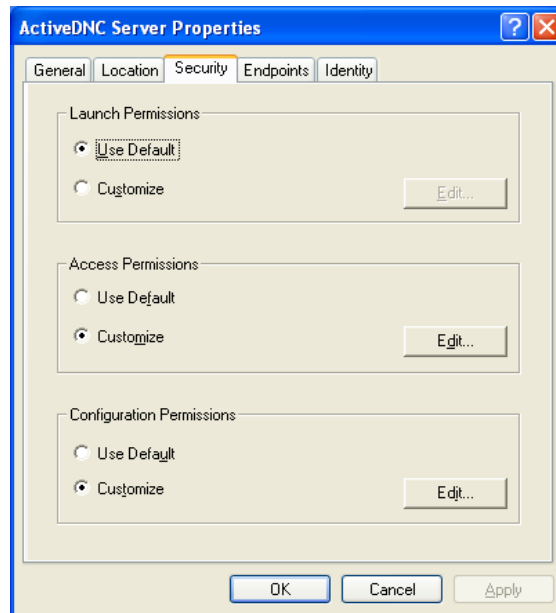
3. Access the DCOM configuration on the workstation by running “Start/Run” and enter “*dcomcnfg*”.
4. For Windows XP, right click on “*ActiveDNC Server*” under the “*Component Services/Computer/My Computer/DCOM Config*” and select “*Properties*”.



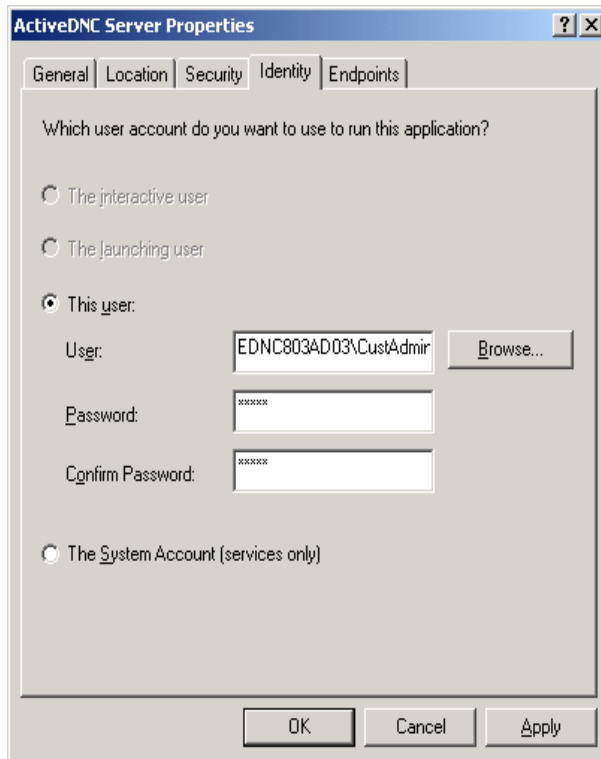
5. For Windows 95, 98, and 2000, double-click on “*ActiveDNC Server*”.



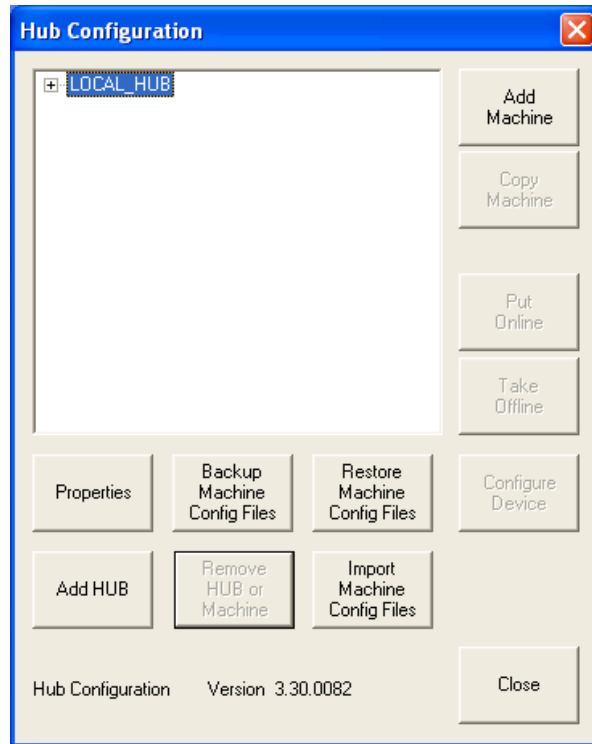
6. The ActiveDNC Server Properties page will be displayed. Click on the “Security” tab. Set the “Access Permissions” to “Customize”. Click on the “Edit” button and add “Everyone” to the list. This field specifies which users have access to this workstations server. If the workstation is a member of a domain, “Everyone” would allow all users of that domain access to the server. If the workstation is a member of a workgroup, “Everyone” would allow all local users accounts on the workstation access. Therefore, if the workstation is a member of a workgroup, a local user account will need to be created on the workstation for each user that needs access.



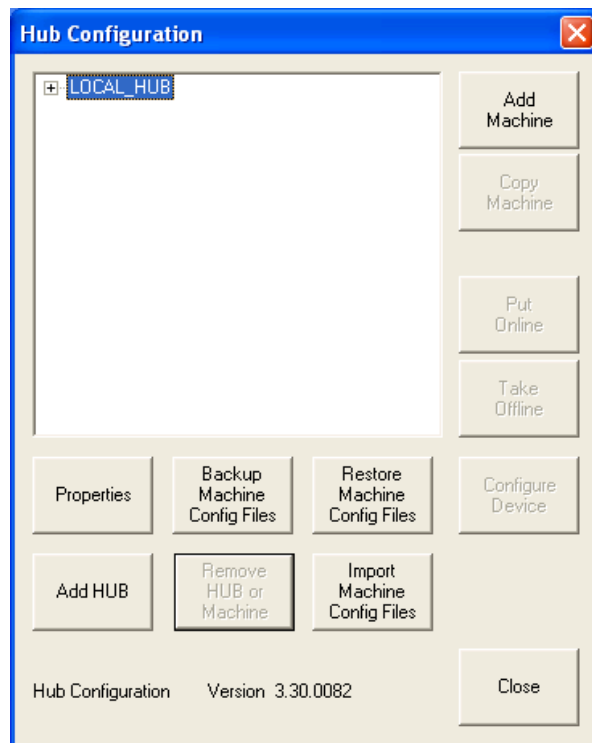
7. Click on the “Identity” tab and verify that the “This user” item is selected. This identifies the user account that the ActiveDNC Server is running as when the server accesses part program files. This user account must be a member of the workstation’s local Administrators group. But this account doesn’t need be a member of the Administrator group elsewhere on the network.



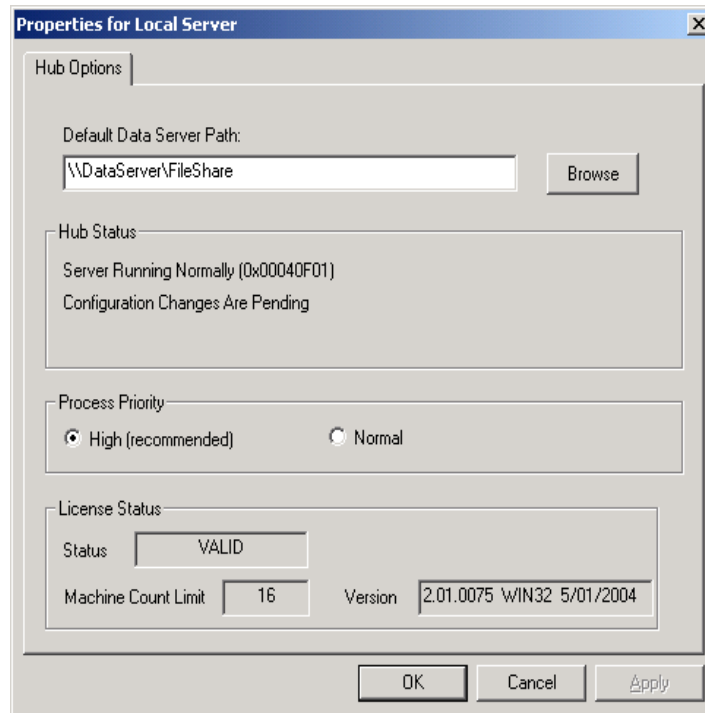
8. Click the “OK” button to save your changes and to exit.
9. For Windows 2000 and XP, select “Start/Administrative Tools/Services”. Double-click on the “EmbeddedDNC Server” service. The properties page will be displayed. Verify that the Startup Type is “Automatic”. This will ensure that the server is always running when the workstation is powered on. Reboot the workstation to ensure that the changes have taken affect.
10. For Windows 95, 98, and NT, select “Start/Control Panel/Services”. Double-click on the “EmbeddedDNC Server” service. The properties page will be displayed. Verify that the Startup Type is “Automatic”. This will ensure that the server is always running when the workstation is powered on. Reboot the workstation to ensure that the changes have taken affect.
11. Run the Machine Configuration utility on the Workstation that is running the EmbeddedDNC Server by selecting “Start/Programs/EmbeddedDNC/Machine Configuration”.



12. Highlight "LOCAL\_HUB" in the Hub Configuration window and click on the "Properties" button.



13. Enter the “Default Data Server Path” in the Properties dialog box for the workstation server. This patch will need to be a shared folder that will contain the log files for the machines that are connected to workstation. This folder will also contain the backup configuration files for the defined machines on this workstation. Click on the “OK” button to accept the “Default Data Server Path” entry.



14. The system is now ready for the addition and configuration of the attached machines. This can be accomplished by running the Machine Configuration utility (“Start/Programs/EmbeddedDNC/Machine Configuration”).
15. Perform steps 15, 16, 17, and 18 under “Running with an e-DNC Hub” for all other workstations that will access the workstation with the attached machine controls.

**The following steps describe the process of configuring the Part Library database.**

16. First determine a location for the database and database application. This can be anywhere as long as each e-DNC Explorer workstation can map to it.

17. Copy the database file, "Program Files\e-DNC Explorer\gspartlib.mdb to that location.
18. Click "Start\Settings\Control Panel" then double click the icon for ODBC (if Windows 2000 or XP, double click the Administrative Tools icon first). See below if there is no applet for ODBC.
19. Click the Drivers tab.
20. Click the System DSN tab.
21. Click the Add button.
22. Select the Microsoft Access Driver (\*.mdb) and click Finish. If the name Microsoft Access Driver (\*.mdb) is not listed, follow the no applet for ODBC steps.
23. Type GS PART LIB into the Data Source Name field.
24. Click the Select button.
25. Using the file dialog box, find and select "gspartlib" in the folder in which you placed it.
26. Click OK and exit the ODBC Configuration.

**If there is no applet for ODBC or it does not contain the above driver, perform the following:**

1. Close the Control Panel and/or any applications.
2. Place the e-DNC Explorer CD in your drive.
3. Browse the CD using Windows Explorer.
4. Double click on the Part Library folder.
5. Double click on Mdac\_typ.exe.

6. Click the Yes button.
7. Click the Continue button.
8. Click the Complete button.
9. Click the OK button when finished.